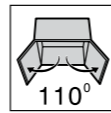




# Finista® Cabinet Hinges

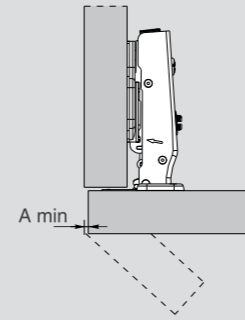
> Simple Quality





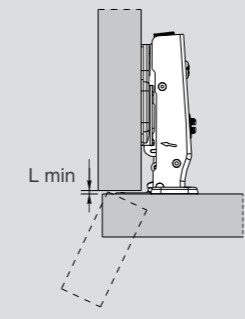
Planning

Space needed to open the door



	T=	16	17	18	19	20	21	22	23	24	25	26
K=3	A=	0.7	0.9	1.2	1.5	1.8	2.2	2.6	3.2	3.8	4.5	5.3
K=4	A=	0.7	0.9	1.1	1.4	1.8	2.1	2.5	3.0	3.5	4.4	4.9
K=5	A=	0.6	0.9	1.1	1.4	1.7	2.0	2.4	2.9	3.4	3.9	4.6
K=6	A=	0.6	0.8	1.1	1.3	1.6	2.0	2.4	2.8	3.2	3.8	4.4

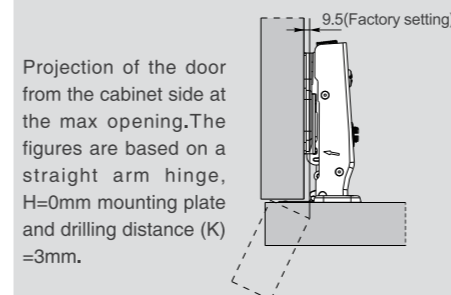
Space needed to open the door



	T=	16	17	18	19	20	21	22	23	24	25	26
K=3	L=	0.0	0.0	0.0	0.0	0.0	0.0	0.0	0.0	0.0	0.0	0.1
K=4	L=	0.0	0.0	0.0	0.0	0.0	0.0	0.2	0.4	0.7	0.9	1.1
K=5	L=	0.0	0.2	0.4	0.6	0.8	1.0	1.2	1.4	1.6	1.8	2.0
K=6	L=	0.9	1.2	1.4	1.6	1.8	2.0	2.2	2.4	2.6	2.8	3.0

- The above values are calculated on the assumption that the doors have square edges.  
 - They are reduced if the doors have radiused edges.

Projection of the door

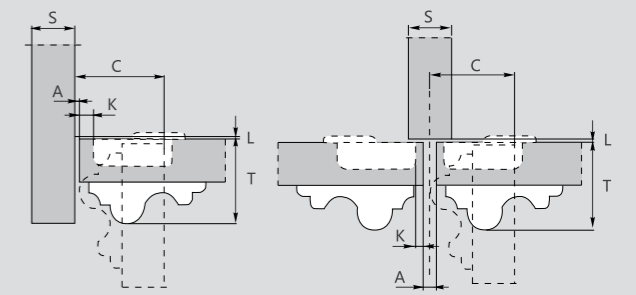


Projection of the door from the cabinet side at the max opening. The figures are based on a straight arm hinge, H=0mm mounting plate and drilling distance (K) =3mm.

"C" value

$C=20+K+A$

With this formula you can obtain the max thickness of the moulded door that can be opened without touching adjacent carcass sides, doors or walls, whilst bearing in mind the above L-K-T values.



Full Overlay Hinge Options

Code	Description	BX Qty
7102151	Finista 110° Soft close hinge, 52	200
7102158	Finista 110° Sprung hinge, 52	200
7102159	Finista 110° Unsprung hinge, 52	200

- Opening angle 110°
- Soft Close Option
- Sprung & Unsprung options
- 16-26mm door thickness

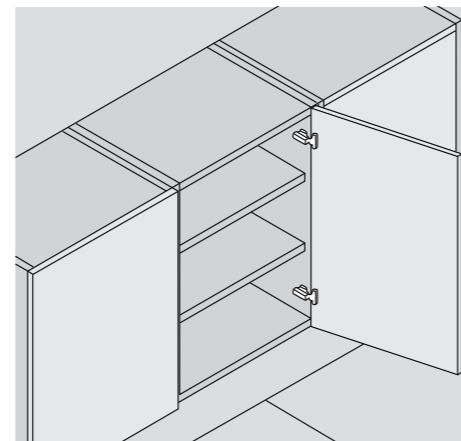
Mounting Plate Option

Code	Description	BX Qty
7102165	Finista 2mm mounting plate with Euro screws	400

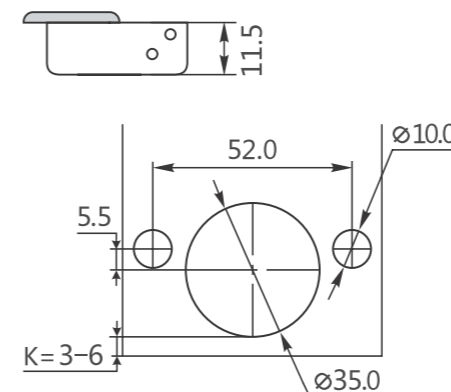
See page 7 for mounting plate specifications

Half Overlay Hinge Option

Code	Description	BX Qty
7102152	Finista 110° Half overlay Soft Close, 52	200



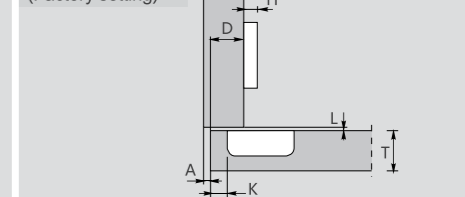
Hinge Drilling Specification



Full overlay C=0



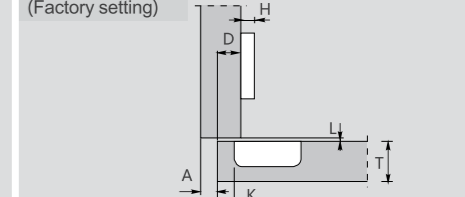
H=12+K-(D)  
(Factory setting)

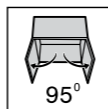


Half overlay C=9



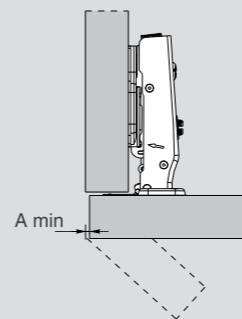
H=3+K-(D)  
(Factory setting)





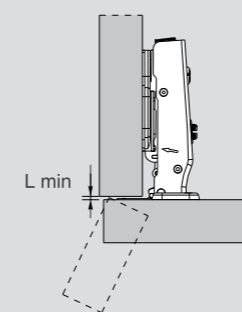
## Planning

### Space needed to open the door



T=	19	20	21	22	23	24	25	26	27	28	29	30	31	32 - 35
K=3 A=	0.1	0.2	0.3	0.4	0.5	0.7	0.9	1.3	2.2	3.2	4.1	5.0	6.0	7.0 - 10
K=4 A=	0.1	0.2	0.3	0.4	0.5	0.7	0.8	1.0	1.6	2.5	3.5	4.4	5.3	6.3 - 9.1
K=5 A=	0.1	0.2	0.3	0.4	0.5	0.7	0.8	1.0	1.2	2.0	2.9	3.7	4.7	5.6 - 8.4
K=6 A=	0.1	0.2	0.3	0.4	0.5	0.6	0.8	1.0	1.2	1.4	2.3	3.2	4.1	5.0 - 7.8
K=7 A=	0.1	0.2	0.3	0.4	0.5	0.6	0.8	1.0	1.2	1.4	1.8	2.7	3.6	4.4 - 7.0
K=8 A=	0.1	0.2	0.3	0.4	0.5	0.6	0.8	1.0	1.1	1.4	1.6	2.2	3.1	3.9 - 6.5
K=9 A=	0.1	0.2	0.3	0.4	0.5	0.6	0.8	0.9	1.1	1.3	1.6	1.8	2.6	3.4 - 6.0

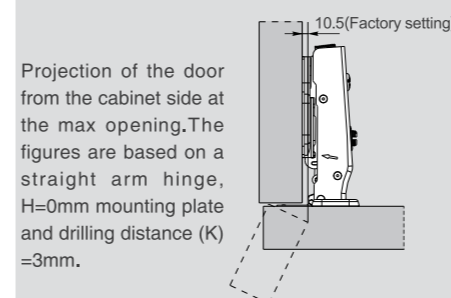
### Space needed to open the door



T=	19	20	21	22	23	24	25	26	27	28	29	30	31	32 - 35
K=3 L=	0.0	0.0	0.0	0.0	0.0	0.0	0.0	0.0	0.0	0.0	0.0	0.0	0.0	0.0 - 0.0
K=4 L=	0.0	0.0	0.0	0.0	0.0	0.0	0.0	0.0	0.0	0.0	0.0	0.0	0.0	0.0 - 0.0
K=5 L=	0.0	0.0	0.0	0.0	0.0	0.0	0.0	0.0	0.0	0.2	0.2	0.3	0.4	0.5 - 0.7
K=6 L=	0.3	0.4	0.5	0.6	0.7	0.7	0.8	0.9	1.0	1.2	1.2	1.3	1.4	1.5 - 1.7
K=7 L=	1.3	1.4	1.5	1.6	1.7	1.7	1.8	1.9	2.0	2.2	2.2	2.3	2.4	2.5 - 2.7
K=8 L=	2.3	2.4	2.5	2.6	2.7	2.7	2.8	2.9	3.0	3.2	3.2	3.3	3.4	3.5 - 3.7
K=9 L=	3.3	3.4	3.5	3.6	3.7	3.7	3.8	3.9	4.0	4.2	4.2	4.3	4.4	4.5 - 4.7

- The above values are calculated on the assumption that the doors have square edges.  
 - They are reduced if the doors have radiused edges.

### Projection of the door

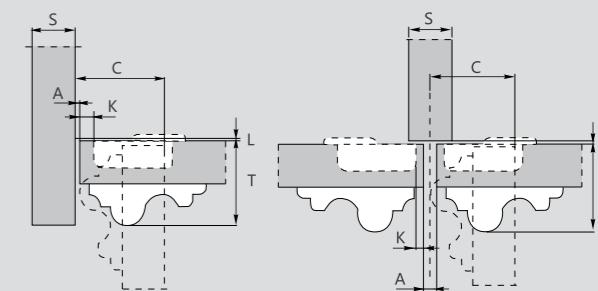


Projection of the door from the cabinet side at the max opening. The figures are based on a straight arm hinge, H=0mm mounting plate and drilling distance (K) =3mm.

### "C" value

$$C = 22 + K + A$$

With this formula you can obtain the max thickness of the moulded door that can be opened without touching adjacent carcass sides, doors or walls, whilst bearing in mind the above L-K-T values.



### Full Overlay Hinge Options

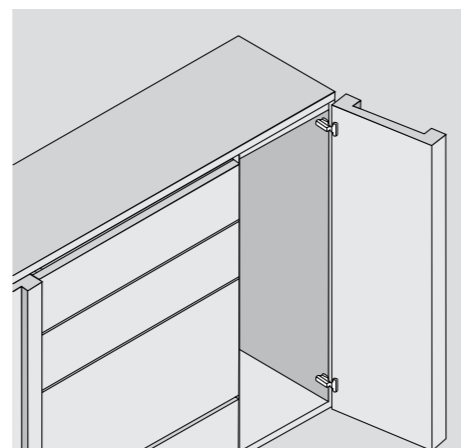
Code	Description	BX Qty
7112625	Finista thick door soft close hinge, 52	200
7102154	Finista thick door sprung hinge, 52	200
7112626	Finista thick door unsprung hinge, 52	200

- Opening angle 95°
- Soft Close Option
- Sprung & Unsprung Option
- 19-35mm door thickness

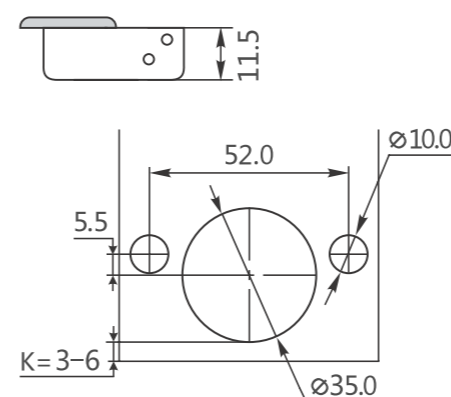
### Mounting Plate Option

Code	Description	BX Qty
7102165	Finista 2mm mounting plate with Euro screws	400

See page 7 for mounting plate specifications



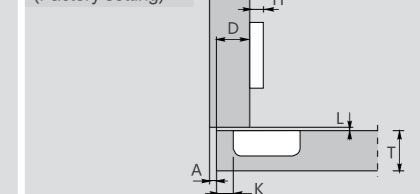
### Hinge Drilling Specification

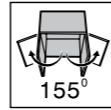


### Full overlay C=0



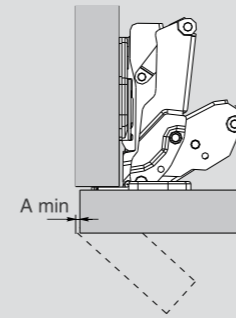
### H=12+K-(D) (Factory setting)





Planning

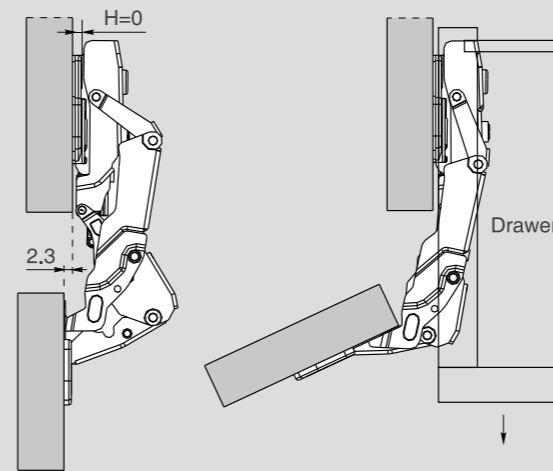
Space needed to open the door



	T=	16	17	18	19	20	21	22	23	24		
K=3	A=	0	0	0	0	0	0	0	0	0		
K=4	A=	0	0	0	0	0	0	0	0	0		
K=5	A=	0	0	0	0	0	0	0	0	0		
K=6	A=	0	0	0	0	0	0	0	0	0		

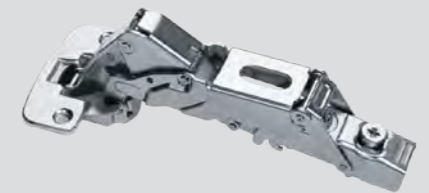
Application

The door combined with a mounting plate H=0, opens at 90° with a 2.3mm protrusion allowing objects (e.g. drawers) move from inside of the cabinet.

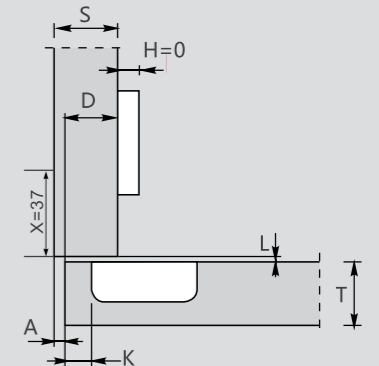


Full overlay C=0

Full overlay C=0



H=11+K-(D)

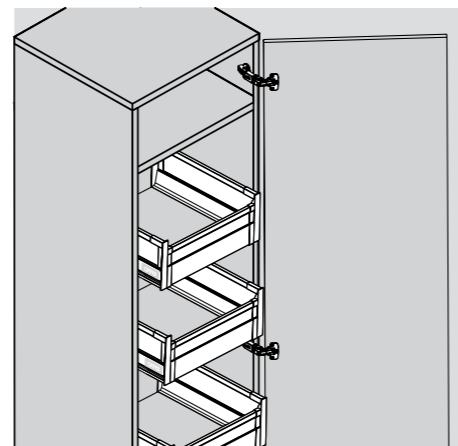


K=5, for full overlay D=16±2mm, H=0 mounting plate only

Full Overlay Hinge Options

Code	Description	BX Qty
7102164	Finista 155° soft close hinge, 52	100
7102162	Finista 155° sprung hinge, 52	100
7102163	Finista 155° unsprung hinge, 52	100

- Opening angle 155°
- Soft Close Option
- Sprung & Unsprung Option
- 16-24mm door thickness

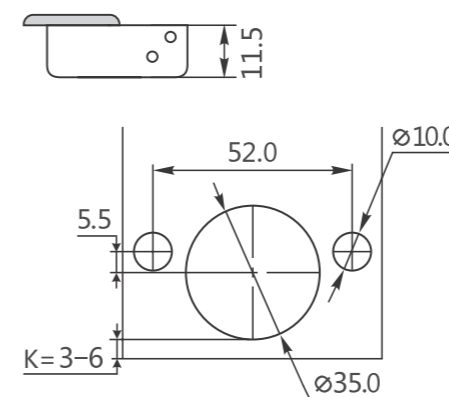


Mounting Plate Option

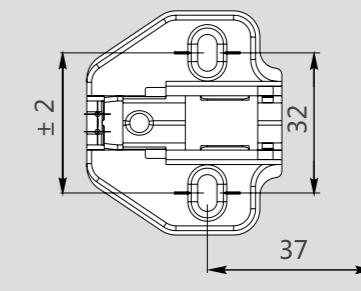
Code	Description	BX Qty
7102165	Finista 2mm mounting plate with Euro screws	400

See page 7 for mounting plate specifications

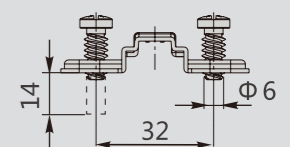
Hinge Drilling Specification

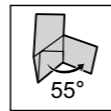


Two Hole Mounting Plate - 2mm 7102165



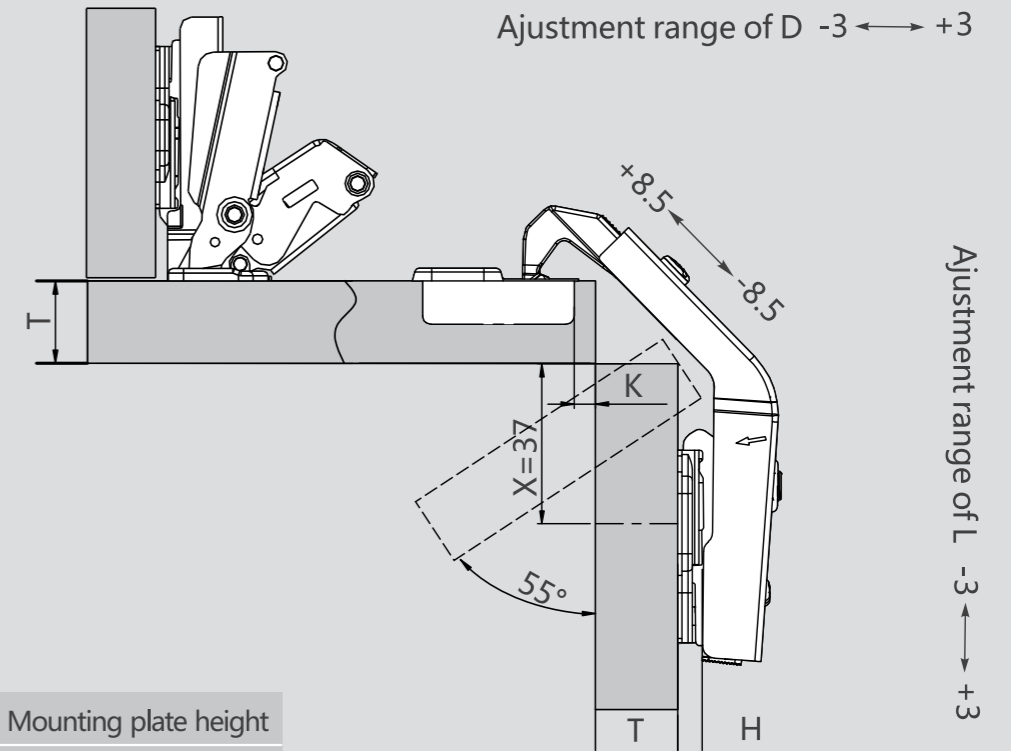
Euro screw





## Planning

T=Door thickness    D=Required door overlay    H=Height of the mounting plate  
 X=Distance from bottom plate screw hole to plate edge    K=Drilling distance  
 L=Gap between door and carcass



Door thickness	Mounting plate height
$14 \leq T < 19$	H=2
T=19	H=2
$19 < T \leq 26$	H=0

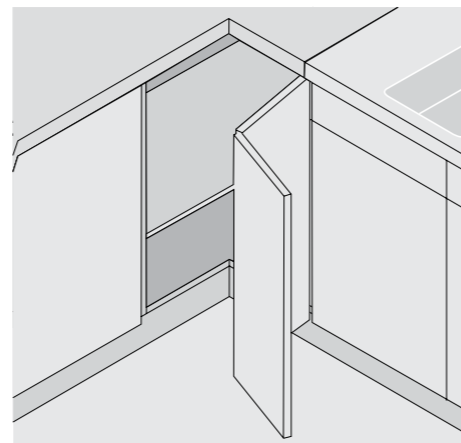
### Full Overlay Hinge Option

Code	Description	BX Qty
7102155	Finista bi fold hinge, 52	200

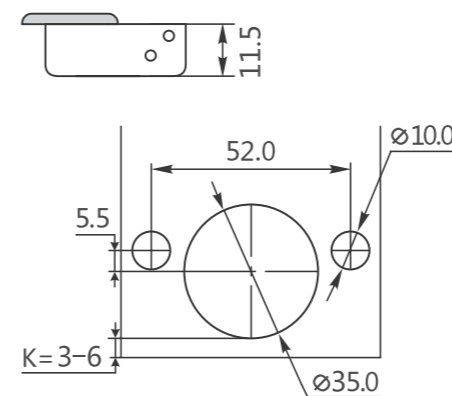
- Opening angle 55°
- 14-26mm door thickness
- Possible drilling distance on the door (K): 3-7mm

### Mounting Plate Option

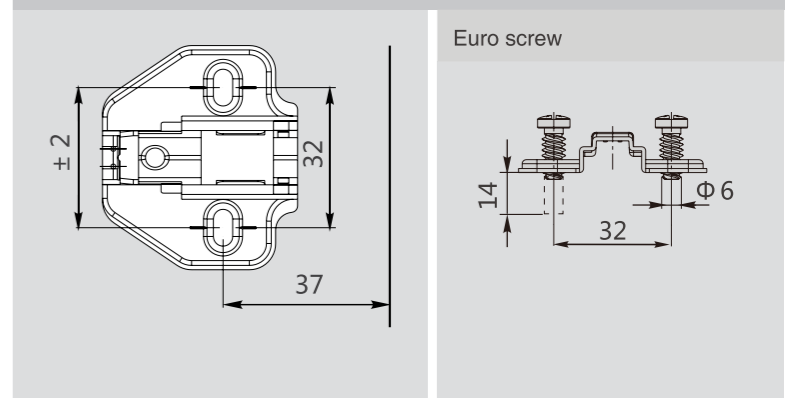
Code	Description	BX Qty
7102165	Finista 2mm mounting plate with Euro screws	400

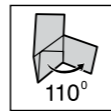


### Hinge Drilling Specification



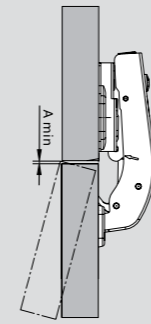
### Two Hole Mounting Plate - 2mm 7102165





Planning

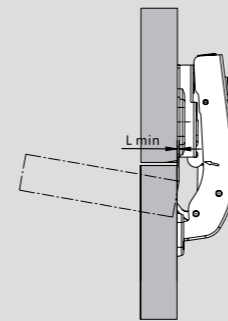
Space needed to open the door



T=	14	15	16	17	18	19	20	21	22	23	24
K=3 A=	0.3	0.5	0.7	0.9	1.2	1.5	1.8	2.2	2.6	3.1	3.8
K=3 A=	0.3	0.5	0.7	0.9	1.1	1.4	1.7	2.1	2.5	3.0	3.5
K=3 A=	0.3	0.5	0.7	0.9	1.1	1.4	1.7	2.0	2.4	2.9	3.4
K=3 A=	0.3	0.5	0.6	0.8	1.1	1.3	1.6	2.0	2.3	2.8	3.2
K=3 A=	0.3	0.4	0.6	0.8	1.0	1.3	1.6	1.9	2.3	2.7	3.1
K=3 A=	0.3	0.4	0.6	0.8	1.0	1.3	1.5	1.9	2.2	2.6	3.0

- T=Door thickness  
- K=Cup hole drilling distance from door edge

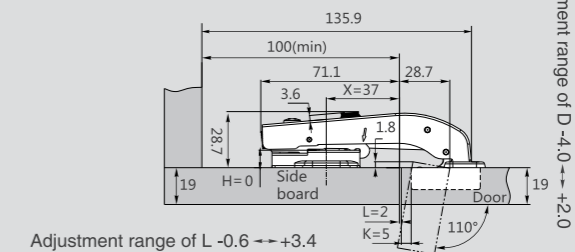
Space needed to open the door



T=	14	15	16	17	18	19	20	21	22	23	24
K=3 L=	0.0	0.0	0.0	0.0	0.0	0.0	0.0	0.0	0.0	0.0	0.0
K=3 L=	0.0	0.0	0.0	0.0	0.0	0.0	0.0	0.0	0.0	0.0	0.1
K=3 L=	0.0	0.0	0.0	0.0	0.1	0.3	0.4	0.6	0.8	1.0	1.1
K=3 L=	0.4	0.6	0.7	0.9	1.1	1.2	1.4	1.6	1.8	1.9	2.1
K=3 L=	1.4	1.5	1.7	1.9	2.1	2.2	2.4	2.6	2.8	2.9	3.1
K=3 L=	2.4	2.5	2.7	2.9	3.0	3.2	3.4	3.6	3.7	3.9	4.1

- The above values are calculated on the assumption that the doors have square edges.  
- They are reduced if the doors have radiused edges.

90°



Adjustment range of L -0.6 to +3.4

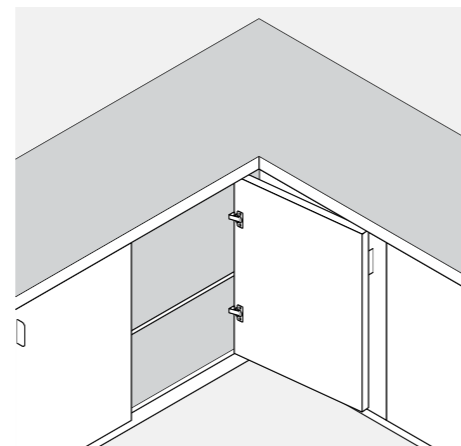
Full Overlay Hinge Options

Code	Description	BX Qty
7102156	Finista blind corner soft close hinge, 52	200
7102157	Finista blind corner sprung hinge, 52	200

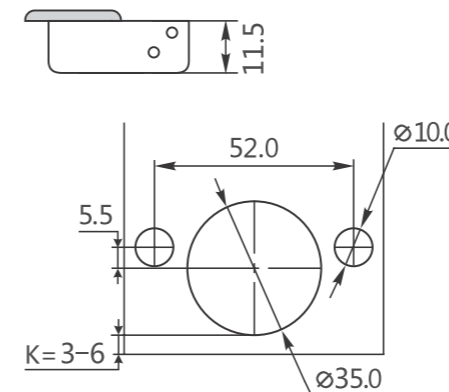
- Opening angle 110°
- Soft Close Option
- Sprung Option
- 16-25mm door thickness

Mounting Plate Options

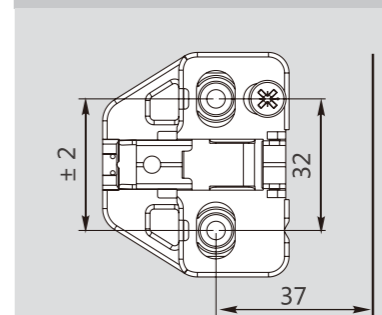
Code	Description	BX Qty
7112624	Finista 0mm mounting plate with cam adjustment	400
7102165	Finista 2mm mounting plate with Euro screws	400



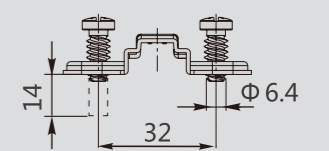
Hinge Drilling Specification

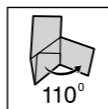


Up & Down cam adjustable mounting plate 0mm 7112624



Euro screw





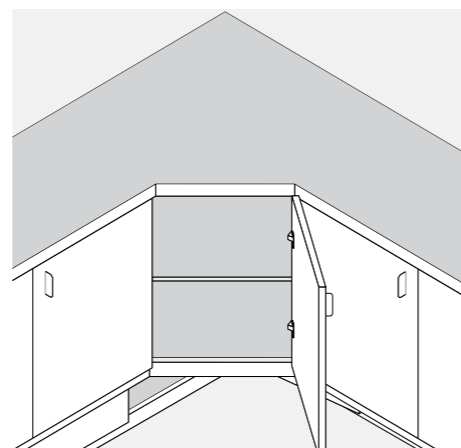
### Full Overlay Hinge Options

Code	Description	BX Qty
7102160	Finista 45° soft close hinge, 52	200
7102161	Finista 45° sprung hinge, 52	200

### Mounting Plate Option

Code	Description	BX Qty
7102165	Finista 2mm mounting plate with Euro screws	400

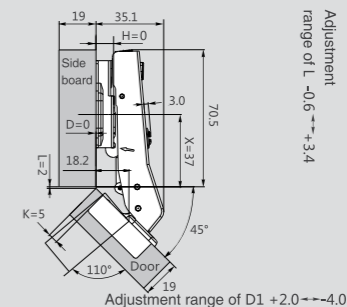
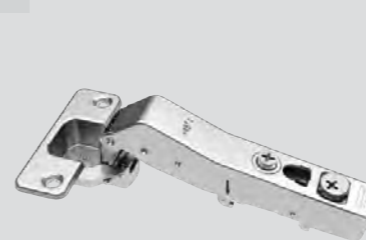
- Opening angle 110°
- Soft Close Option
- Sprung Option
- 16-26mm door thickness
- Possible drilling distance on the door (K):3-6mm



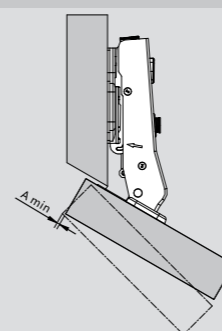
## Planning

### Kitchen corner door applications

45°



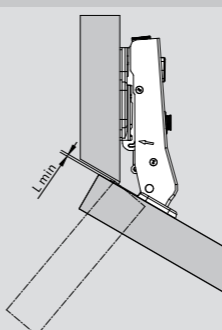
### Space needed to open the door



	T=	14	15	16	17	18	19	20	21	22	23	24
K=3	A=	0.3	0.5	0.7	0.9	1.2	1.5	1.8	2.2	2.6	3.1	3.8
K=3	A=	0.3	0.5	0.7	0.9	1.1	1.4	1.7	2.1	2.5	3.0	3.5
K=3	A=	0.3	0.5	0.7	0.9	1.1	1.4	1.7	2.0	2.4	2.9	3.4
K=3	A=	0.3	0.5	0.6	0.8	1.1	1.3	1.6	2.0	2.3	2.8	3.2
K=3	A=	0.3	0.4	0.6	0.8	1.0	1.3	1.6	1.9	2.3	2.7	3.1
K=3	A=	0.3	0.4	0.6	0.8	1.0	1.3	1.5	1.9	2.2	2.6	3.0

- T=Door thickness
- K=Cup hole drilling distance from door edge

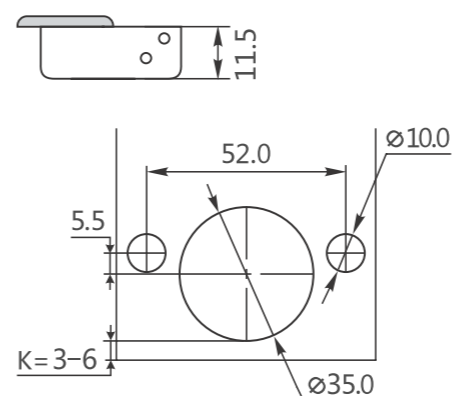
### Space needed to open the door



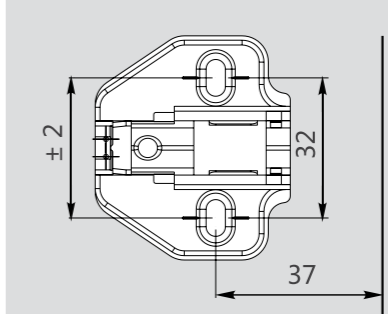
	T=	14	15	16	17	18	19	20	21	22	23	24
K=3	L=	0.0	0.0	0.0	0.0	0.0	0.0	0.0	0.0	0.0	0.0	0.0
K=3	L=	0.0	0.0	0.0	0.0	0.0	0.0	0.0	0.0	0.0	0.0	0.1
K=3	L=	0.0	0.0	0.0	0.0	0.1	0.3	0.4	0.6	0.8	1.0	1.1
K=3	L=	0.4	0.6	0.7	0.9	1.1	1.2	1.4	1.6	1.8	1.9	2.1
K=3	L=	1.4	1.5	1.7	1.9	2.1	2.2	2.4	2.6	2.8	2.9	3.1
K=3	L=	2.4	2.5	2.7	2.9	3.0	3.2	3.4	3.6	3.7	3.9	4.1

- The above values are calculated on the assumption that the doors have square edges.
- They are reduced if the doors have radiused edges.

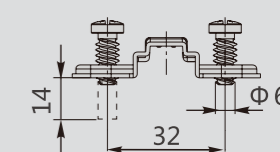
### Hinge Drilling Specification



### Two Hole Mounting Plate - 2mm 7102165



### Euro screw



**FINISTA** CABINET HINGES

**Finista**<sup>®</sup> | Finish  
with  
Style



**National Customer Support:**

**Ph: 1300 551 919**

**Fax: 1300 739 656**

**E-mail: [orders@lincolnsentry.com.au](mailto:orders@lincolnsentry.com.au)**

**GET  
SOCIAL**

 **@lincolnsentry**

 **Lincoln Sentry Group Pty Limited**

**ORDER  
ONLINE**

**[lincolnsentry.com.au](http://lincolnsentry.com.au)**